

# SUCCESS CIRCUITS



One-stop PCBA Service Provider

SUCCESS CIRCUITS GROUP LIMITED

# CONTENTS

01



Company Profile

02



Our Services

03



Components  
&  
PCB

04



Technical  
Solution  
Development

05



About Us



01

**Company profile**



### SUCCESS CIRCUITS GROUP LIMITED

SCSPCBA, the full name of SUCCESS ELECTRONIC., LTD, was established in 2013 and is affiliated to SUCCESS CIRCUITS GROUP LIMITED . which is committed to providing one-stop services for samples and batch orders in PCB manufacturing, component sourcing, PCB assembly, and testing.



2 factories (10 SMT lines and 4 DIP lines) for production



#### Strong and professional teams

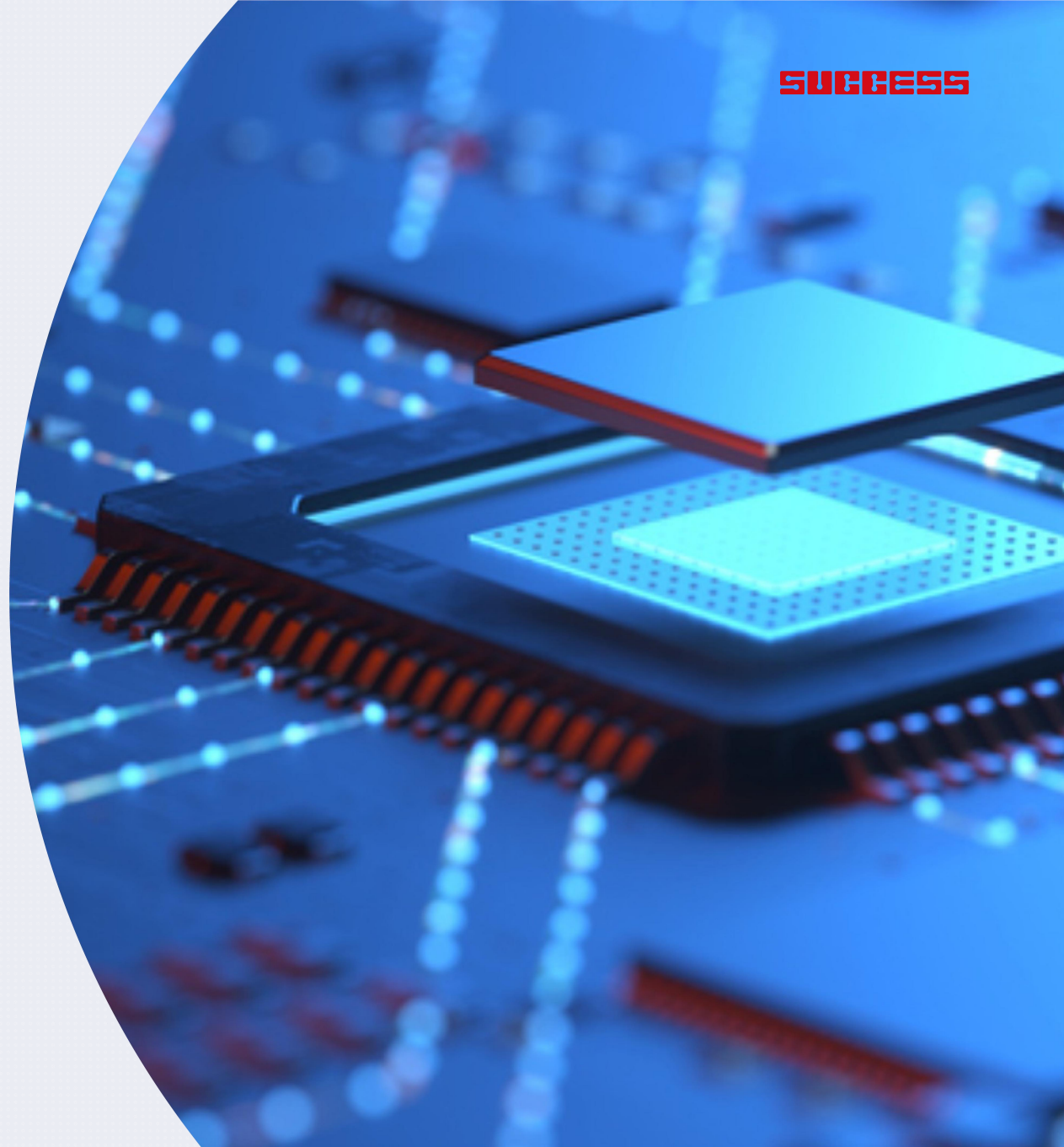
- Experienced and skilled engineering team
- Excellent and professional sales team
- Effective and efficient customer service team
- Productive and technical procurement team
- Qualified and trust-worthy assembly testing team



Fast response, fast production and fast delivery

---

One-Stop Electronics Manufacturing Service (EMS) Provider





## Development History

**SUCCESS**

**2005**

Established a PCB factory,  
Shenzhen Global Success  
Circuits

**2007**

Started international trading  
operations at SCSPCB, focus  
on Rigid, Metal-based PCB  
services

**2011**

Opened a PCB factory,  
Jiangxi Global Success  
Circuits

**2013**

Founded a new SMT factory,  
Success  
Electronic Co., Ltd.

**2015**

Launched another PCB  
factory, Jiangsu Global  
Success Circuits.

**2017**

Began production at the  
Jiangsu factory.

**2019**

Opened a new SMT  
factory with SCSPCBA in  
Shenzhen.

**2024**

Launched another EMS  
factory with in Vietnam.

SUCCESS  
CIRCUITS GROUP

PCB factory

PCBA factory

China PCB  
factory I

China PCB  
factory II

China PCBA  
factory

Vietnam PCBA  
factory







Our headquarters and one-stop PCBA factory are in Shenzhen. We offer full PCBA services, including design, manufacturing, assembly, testing, and delivery, with a focus on quality and timely delivery for global clients.



We also have a factory in Vietnam to better serve our overseas customers. This facility offers the same one-stop PCBA services, including design, manufacturing, assembly, testing, and delivery, ensuring high-quality and efficient solutions for international clients.





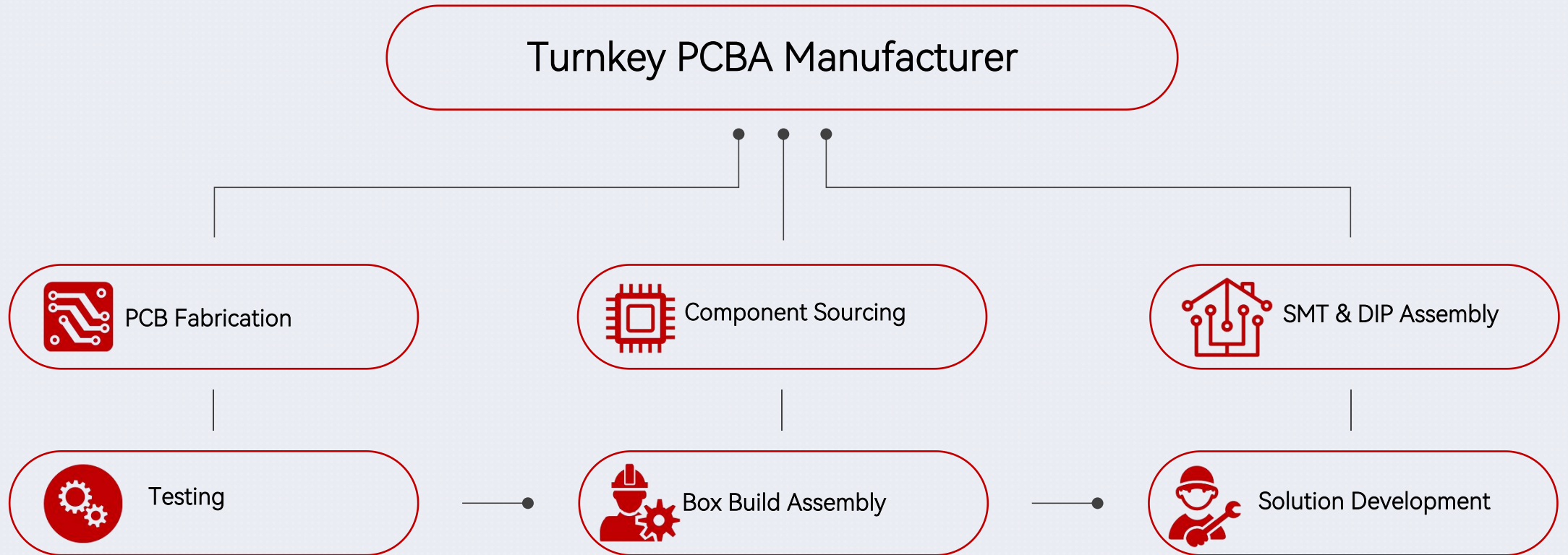
### Wuhan Branch

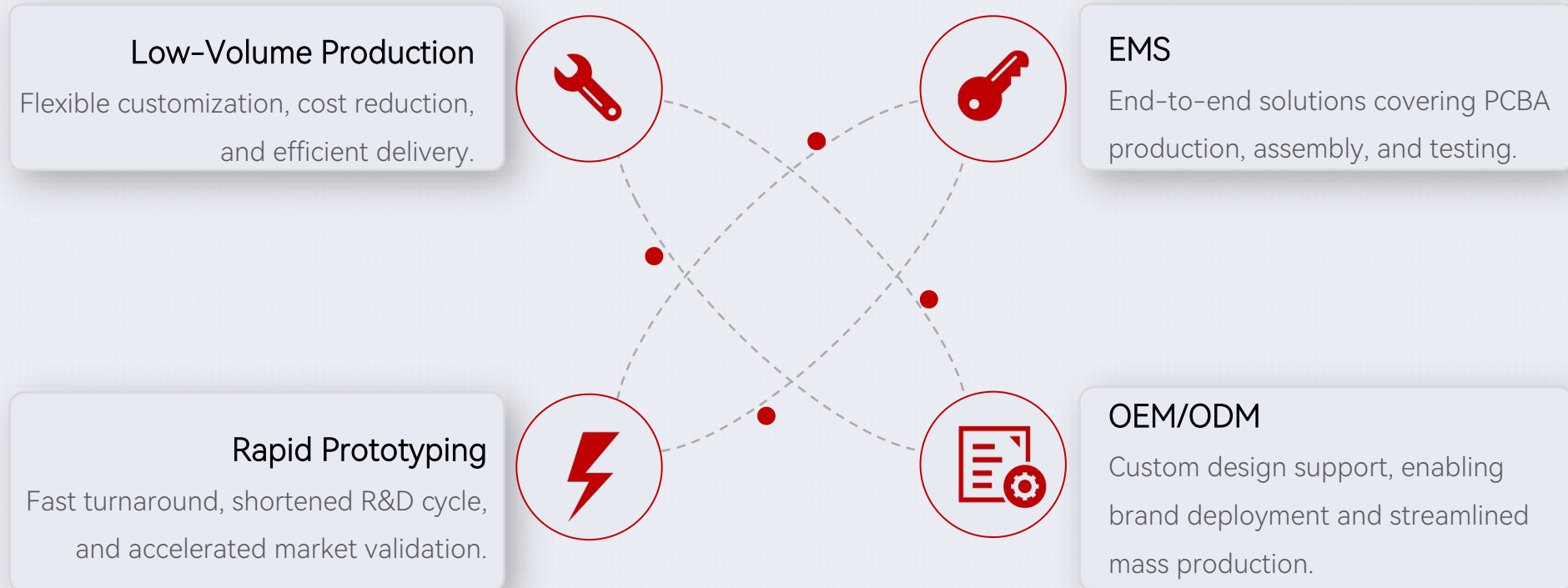
The Wuhan branch optimizes production and logistics management, reducing costs and improving efficiency, offering customers competitive prices.



### US Branch

The U.S. branch provides fast, localized services, ensuring quick technical support and after-sales response, while strengthening the brand's influence in the U.S. market and enhancing customer satisfaction.







## Online Quote

1

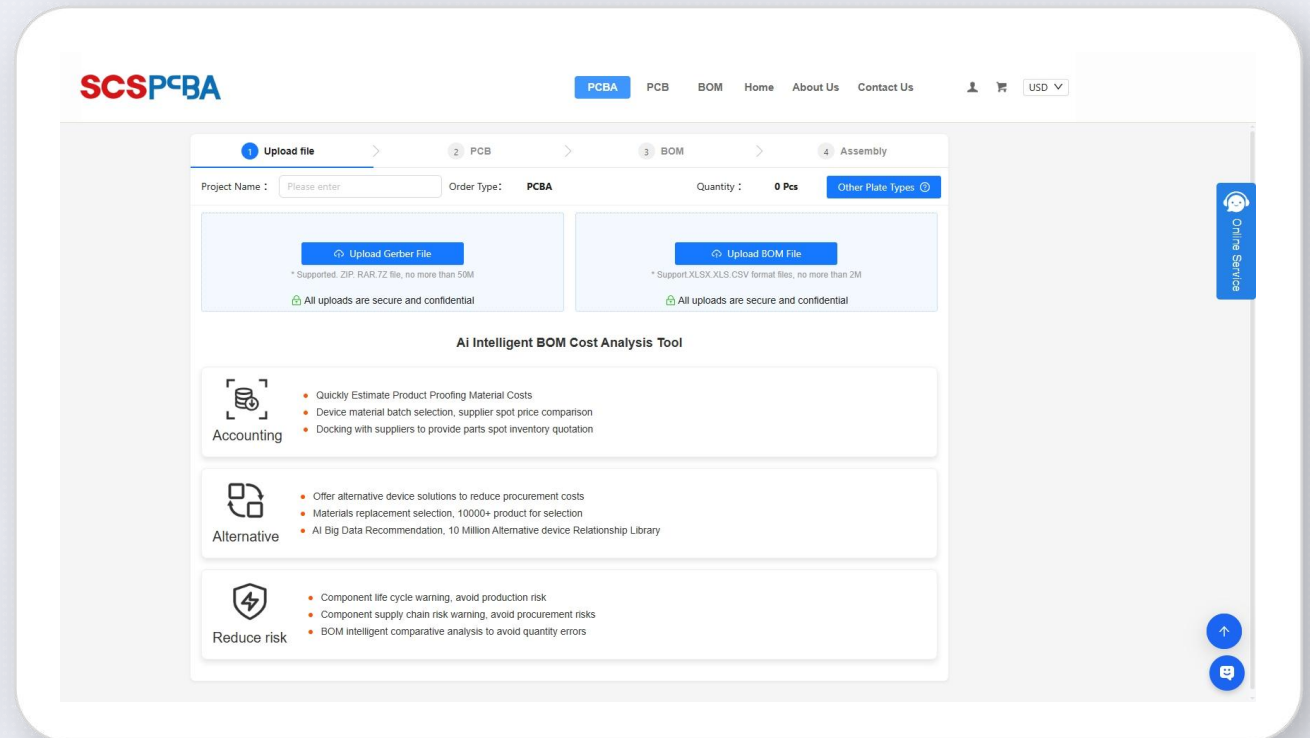
**Efficiency:** The system enables quick and accurate price generation, saving time on manual calculations.

2

**Customization:** It allows users to tailor their quotes based on specific project requirements, ensuring precise results.

3

**Transparency:** The platform offers clear and detailed cost breakdowns, making it easier to understand pricing structures.





200+

"Serving over 200 countries and regions worldwide, we provide high-quality services to support efficient procurement—saving you time, effort, and worry!"



10000

"Over 10,000 customers served, specializing in PCBA manufacturing, pursuing excellence, providing efficient, precise, and reliable solutions to drive product innovation and upgrades."



12h

"Fastest delivery in 12 hours, precise and efficient, ensuring your business kicks off on time and every project flows seamlessly, quickly meeting market demands!"



200

"Over 200 orders daily, fast response, efficient delivery. With powerful production capabilities and precise process management, we ensure every customer's diverse needs are perfectly met, helping your business grow steadily!"



02

## **Our Services**





In SMT/DIP, we leverage our expertise in small-batch production and fast prototyping to offer EMS (Electronics Manufacturing Services) and a one-stop solution, ensuring quick turnaround times, high-quality samples, and seamless production from design to final assembly. Our ability to handle both small and large-scale orders allows us to cater to diverse customer needs, whether it's for rapid prototyping or mass production. With our end-to-end services, including design, assembly, testing, and packaging, we provide a comprehensive solution that reduces lead times, minimizes costs, and ensures consistent product quality, making us a reliable partner for businesses looking for efficient and flexible manufacturing solutions.

## Regular delivery time

- Regular proofing (within 50pcs): 3 days for all materials
- Small batch (50-500pcs): 3-5 days
- Large batch ( $\geq 500$ pcs): 5-7 days

## PCBA welding type

- Surface mount (SMT)
- DIP

## Daily production capacity

- PCBA patch 12 million points/day
- Plug-in post-welding 500,000 points/day

## Ball parts (bga) spacing

- Not less than 0.3mm

## Plate thickness

- No more than 3mm (no thickness limit for samples)

## Minimum order quantity

- 1 set

## Parts placement accuracy (100FP) Full

- placement accuracy 0.0375mm

## Components service

- Full set of materials, partial materials, only OEM

## PCBA circuit board size

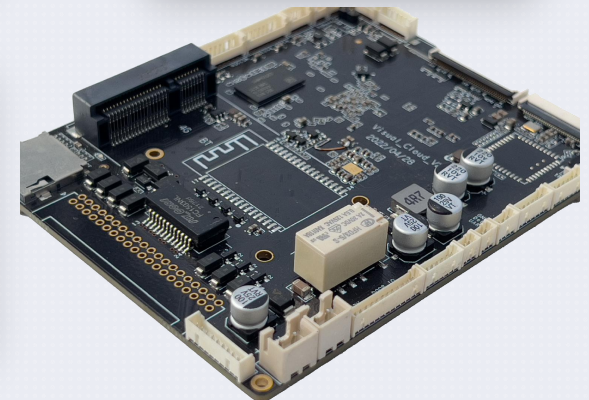
- Small board size: 45mmx45mm (smaller than this size requires board assembly)
- Large board size: 400mmx1200mm

## PCB board types that can be mounted

- PCB hard board (FR-4, metal substrate)
- PCB soft board (FPC)
- Soft and hard combination
- PCB aluminum substrate

## Component size

- Passive components: mounting British 01005 (0.4mm\*0.2mm), 0201
- BGA and other high-precision ICs: support X-ray detection of BGA components







High Precision

High Speed

High Reliability

■ In our PCBA manufacturing process, the stability and precision of our SMT pick-and-place machines are key advantages. These features directly impact the welding quality and product reliability. With high-speed placement capabilities, our machines are ideal for both small-batch prototyping and large-scale production, providing a solid foundation for subsequent reflow soldering, inspection, and final assembly.





---

High Precision

---

High Speed

---

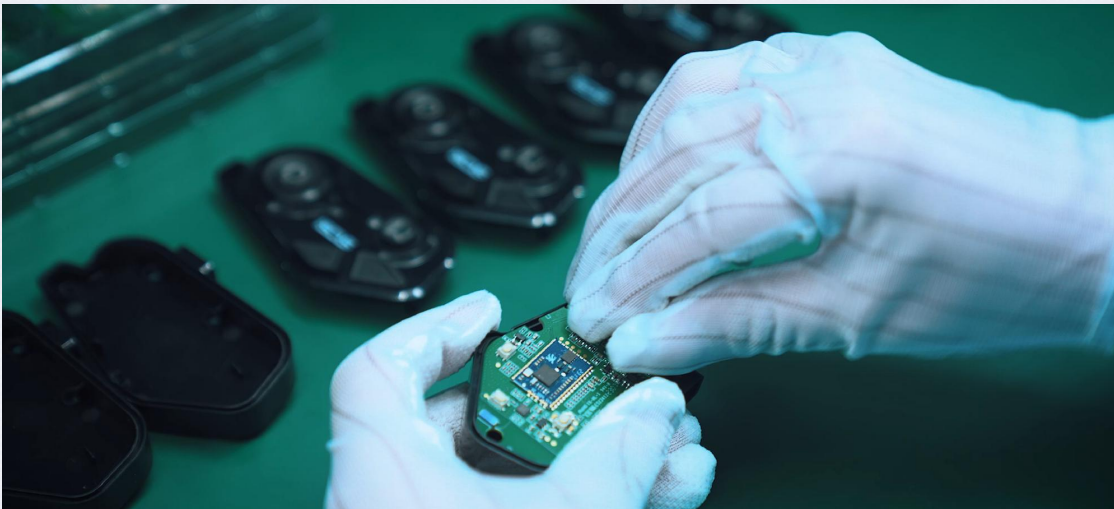
High Reliability

■ In our PCBA manufacturing process, we use wave soldering or hand soldering for the insertion of DIP components, which are known for their strong mechanical strength and durability. These components are ideal for complex circuits, especially in medium to small-batch production. Despite the rapid advancement of Surface-Mount Technology (SMT), DIP components remain crucial in certain specialized applications, highlighting our ability to meet diverse customer needs.



In post-soldering, our company ensures high-quality services through advanced hand soldering and reflow techniques, accurately reworking components that were not fully soldered during SMT and DIP. Our experienced engineers quickly identify and fix defects, ensuring products pass rigorous quality checks. With efficient processes and strict quality control, including visual and X-ray inspections, we maintain consistent soldering quality for both small and large-scale production. This flexibility helps enhance product quality and market competitiveness.





### Box Build Assembly

Our "Box Build Assembly" service provides a complete assembly process from PCBA to final product, including the precise integration of the circuit board with components such as enclosures, connectors, displays, and batteries, ensuring that the system's functionality, appearance, and quality meet high standards. We offer efficient integration capabilities, enabling quick responses to customer needs and providing customized complete machine manufacturing services. Whether for small batch orders or large-scale production, we are flexible in meeting demands while ensuring product quality and on-time delivery. Our strict quality management system and full-process tracking ensure that every product meets international standards, offering efficient solutions that help customers improve supply chain efficiency, reduce production cycles, and lower costs.





Automatic Solder  
Paste Printer



SPI



Coveryor Belt



Yamaha Pick and  
Place Machine



Yamaha Pick and  
Place Machine



DIP Soldering



X-RAY



Online Automated  
Optical Inspection



Reflow Soldering



Coveryor Belt



Wave Soldering



Post Soldering



Functional Testing

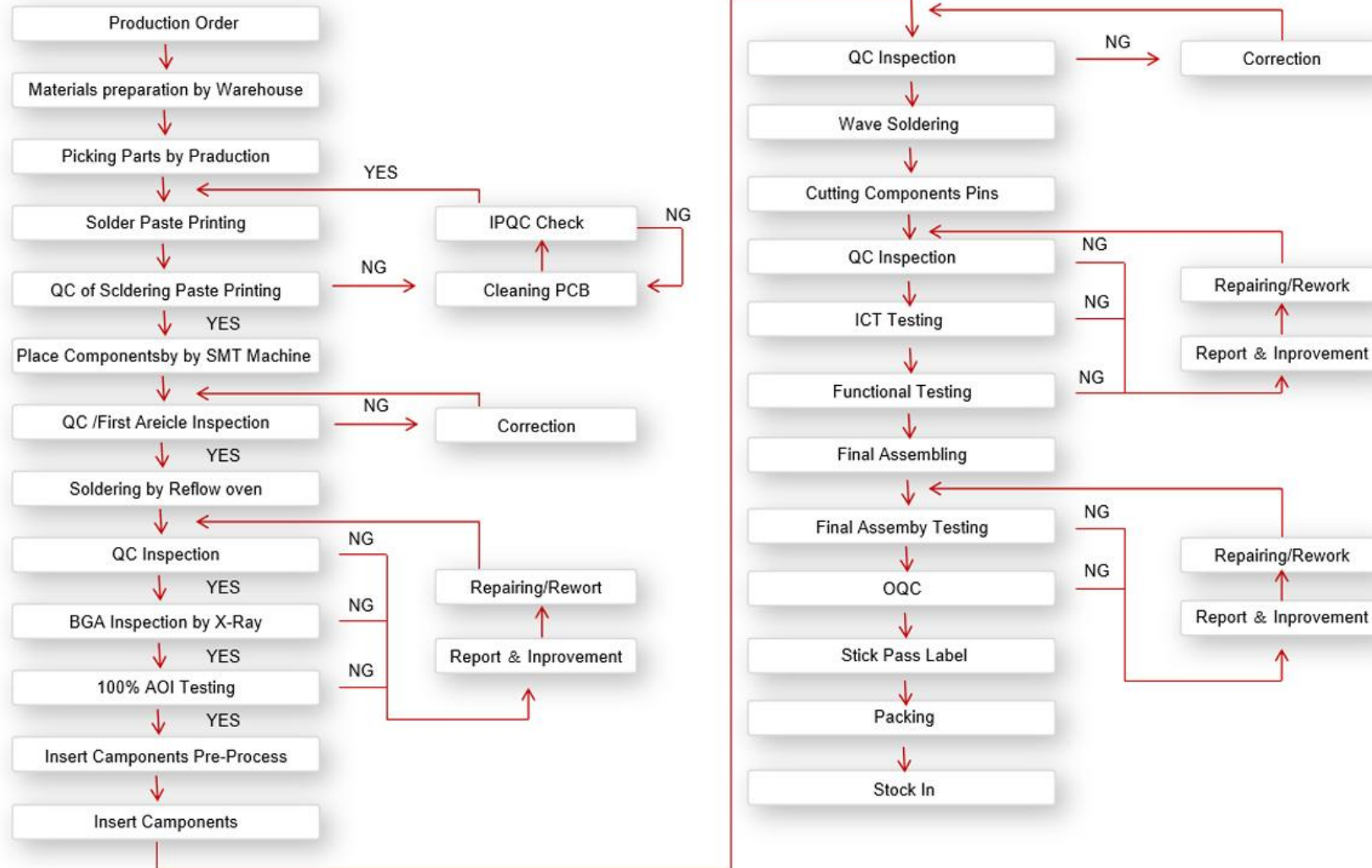


Box Build Assembly



Package







## AOI

We use AOI equipment to inspect the soldering quality and component placement accuracy on the PCBA, ensuring defect-free assemblies.



## X-RAY

We use X-ray equipment to inspect hidden solder joints, ensuring the internal quality of components like BGA and verifying the reliability of the assembly.



## ICT

We use ICT equipment to perform electrical testing on the PCBA, identifying issues such as shorts, opens, and component faults to ensure circuit functionality.





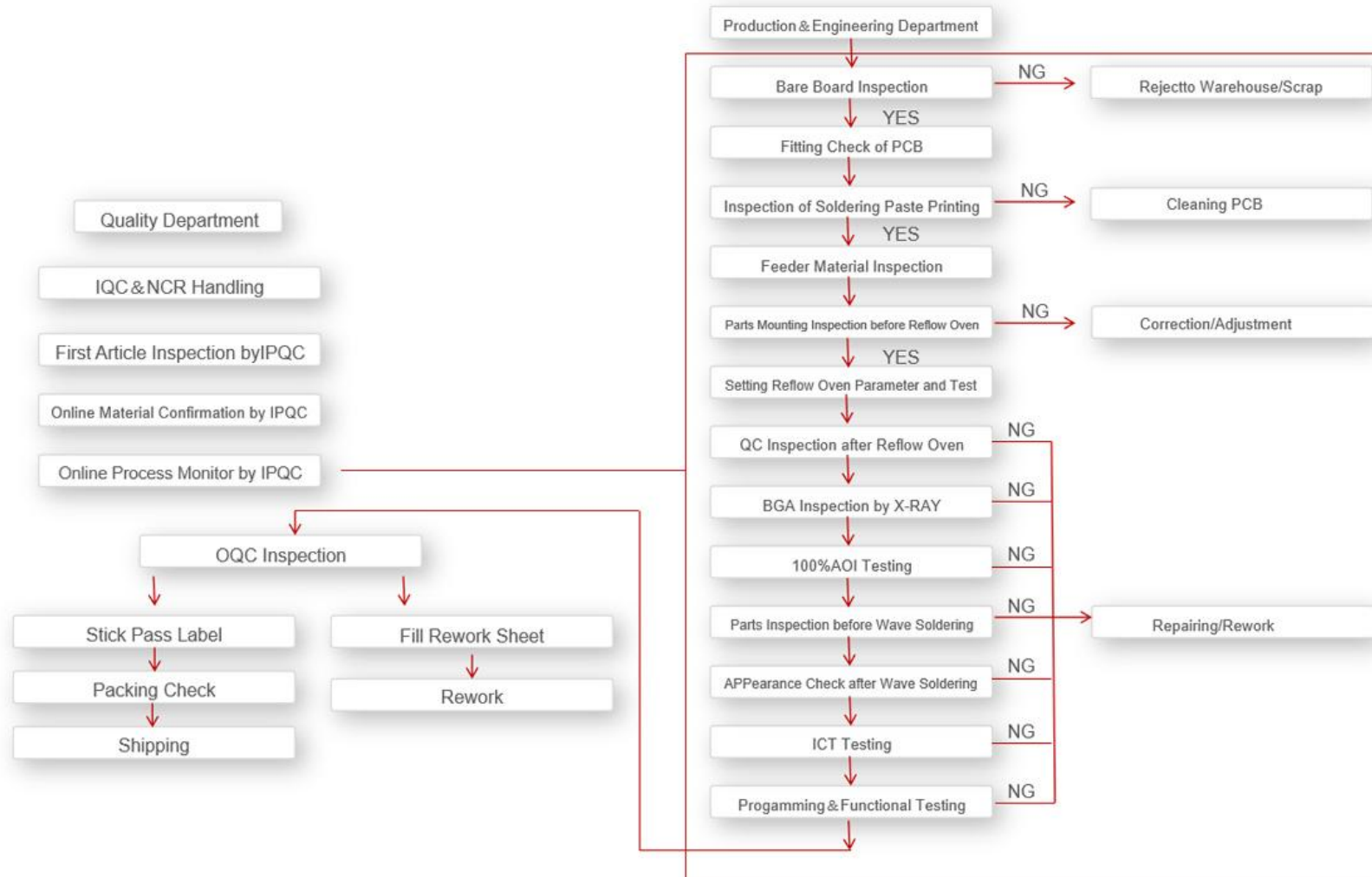
## FCT

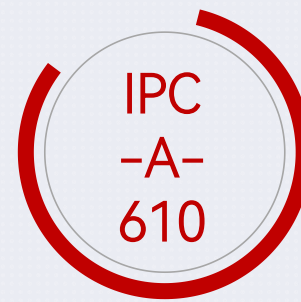
We use FCT equipment to simulate real operating conditions and test the functionality and performance of the PCBA, ensuring it operates correctly under expected usage.



## Reliability Testing

We conduct reliability testing to ensure the long-term stability and durability of the PCBA by subjecting it to extreme environmental conditions.





### Global Standards Certification for High-Quality One-Stop PCBA Solutions

Our quality management system strictly adheres to ISO 9001, ISO 13485, IATF 16949, IPC-A-610, and RoHS & REACH international standards, ensuring that our PCBA products meet global excellence in quality, reliability, and environmental compliance. With high-precision SMT placement, stable DIP processes, rigorous FCT functional testing, and a comprehensive traceability system, we meet the demanding standards of industries such as medical, automotive, and industrial control, providing customers with high-quality and highly reliable one-stop PCBA solutions.





ISO9001:2015



IATF16949



UL/CUL



ISO:13485



QCO80000



SQ



CQC



ISO:45001

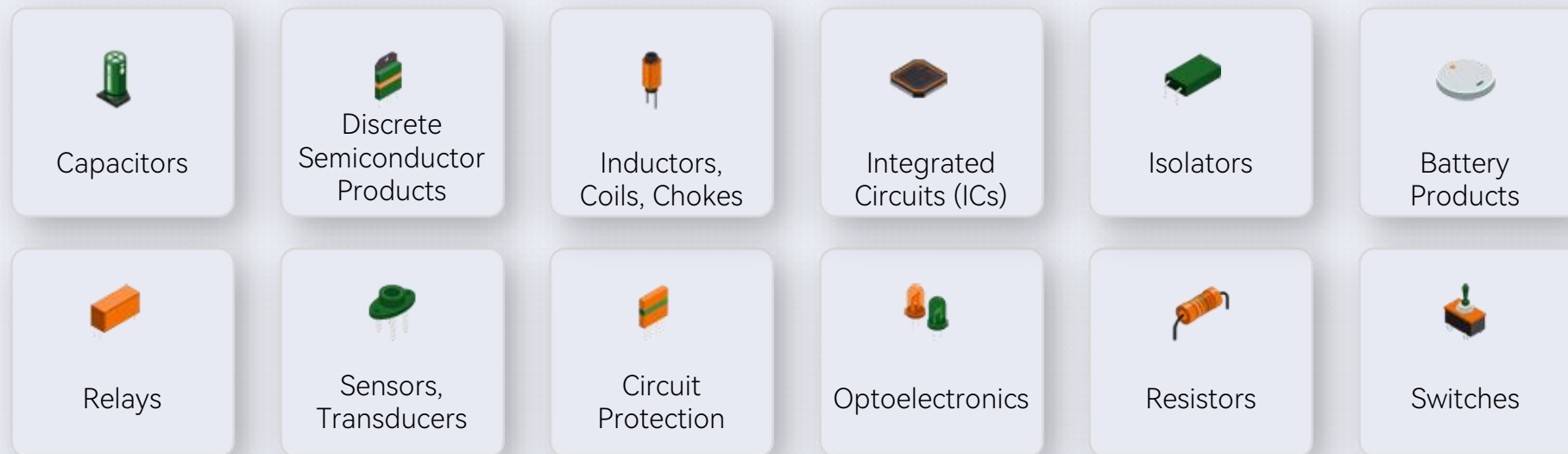




03

**Components  
&  
PCB**





We have an extensive network of component suppliers and a strong global supply chain, including original manufacturers, authorized agents, and reliable channels, ensuring stable supply of high-quality components. With years of industry experience, we've built an efficient procurement system that provides flexible BOM optimization, cost control, and fast delivery, while ensuring quality and traceability.

Our supply chain is highly adaptable and resilient, allowing us to quickly adjust procurement plans based on market changes and customer needs, reducing risks of production delays or stock shortages. Whether for small batch prototyping or large-scale production, we offer stable and efficient supply chain support to help clients stay competitive.



# Components

SUCCESS

VARITRONIX

Verivolt

VersaSense

Vicotee

VISHAY

electric imp

VCC

VISLEY  
FREEDOM  
GROUP

eao

Eink

EATON  
Powering Business Worldwide

ebmpapst

YAGEO

EDAC INC

DISPLAY  
VISIONS

ELECTRONIC  
ASSEMBLY

ELNA  
AMERICA, INC.

EPSON

EZ-HOOK

ERP

PARLEX

PATCO

Particle

PATCO  
SERVICE INC.

PERVASIVEDISPLAYS

Virtium  
Solid State Storage and Memory

ECHOLON

Embedded  
ARM

ESPRESSIF

ESSENTRA  
COMPONENTS

Esterline  
Communication Technologies  
SOURIAU

E-SWITCH

POWEREX

POWERcast

power  
integrations

Pulsar

Peerless  
by Futurevis

vikings  
TECHNOLOGY

EQUINOX

Energizer

ETA

ethertronics

EVERSPIN  
TECHNOLOGIES

PHOENIX  
CONTACT

PIRONG

proAnt

Semi

Pulse  
Electronics

PacketDigital LLC

VICOR

EnerSys

EPC

EVERLIGHT

EXCELITAS  
TECHNOLOGIES

PIMORONI

Portescap

Pontiac Coil

Precision  
potentiometers

pui  
audio

PULS

Panasonic

VECTOR  
ELECTRONICS & TECHNOLOGY, INC.

enoclean

TDK

excelsys

PANDUIT

PARALLAX

Parker  
Chomerics

Pi Supply  
The Maker Emporium

Phyt

PHOENIX MECANO

Pomona  
ELECTRONICS

PANAVISE

Jiangsu GLOBAL

Area	Employees	Production Capacity	Goal
60,000m²	600+ people	50,000+ m²/Month	To build China’s top high-end electronic products PCB manufacturing base.



Jiangxi GLOBAL

Area: 18000m²	Area: 18000m²	Single-sided
Double sided	Metal PCB	20000 + m²/Month







04

**Technical  
Solution  
Development**

1

We provide tailored solutions to meet customer needs.

2

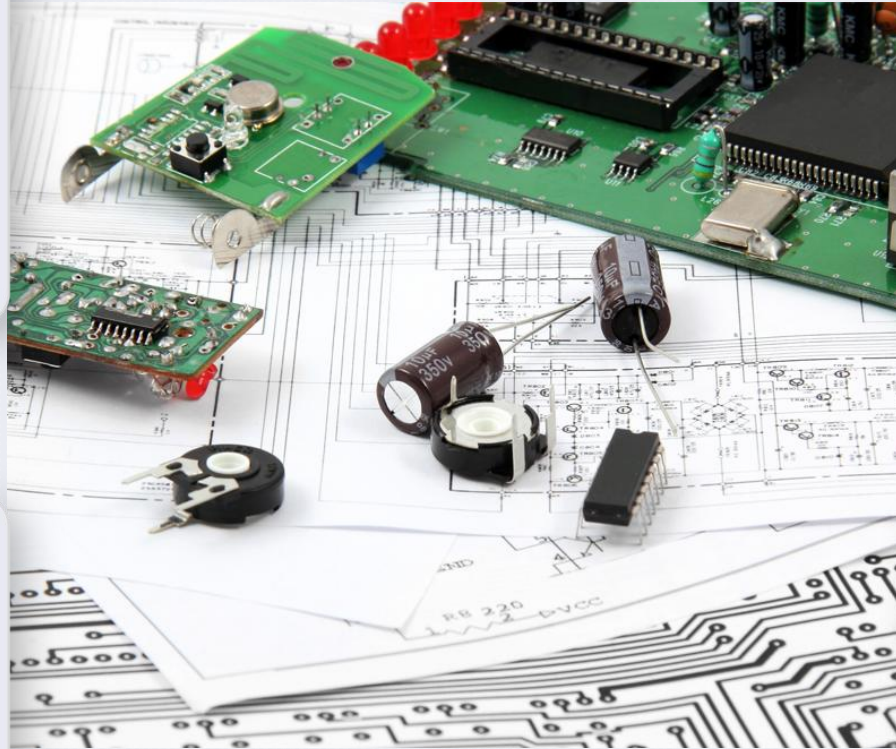
We respond quickly to customer needs and adjust solutions flexibly.

3

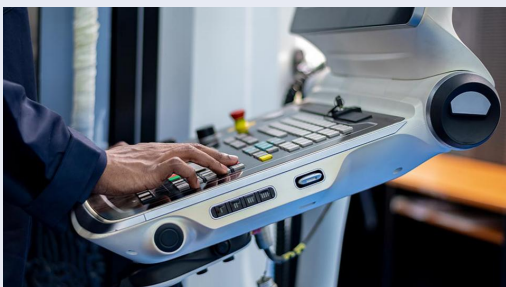
Our expert team offers comprehensive technical support.

4

We provide technical support, troubleshooting, and training to ensure stable product performance.







Industrial Control



Medical Electronics



Automotive  
Electronics



New Energy



Security System



Smart Home



05

**About Us**





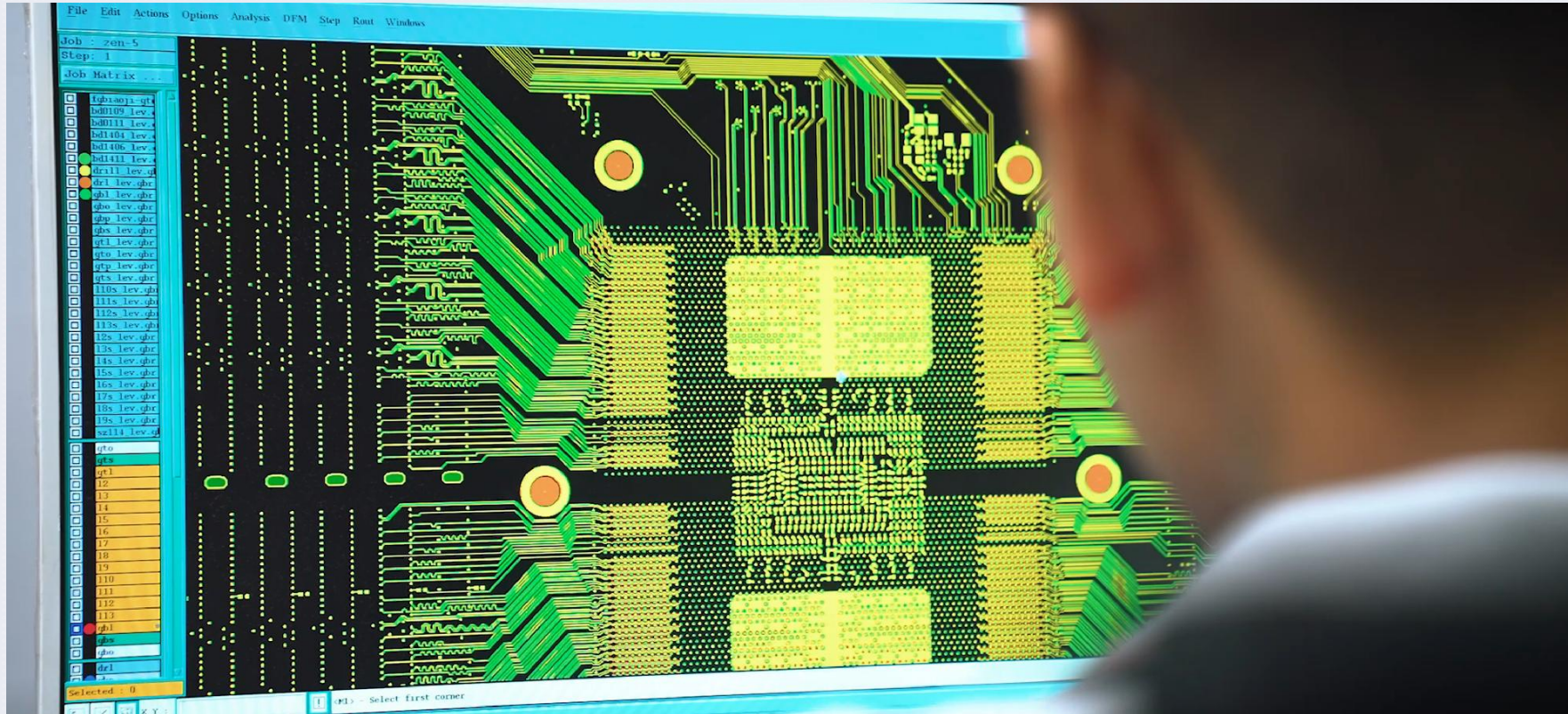
1

**Procurement Team:** Responsible for sourcing raw materials and components, ensuring the quality and stability of the supply chain.

2

**Customer Service Team:** Communicates with customers to understand their needs, provides solutions, and handles after-sales service and technical support.





1

**R&D Team:** Responsible for product design and development, including circuit design, prototype testing, and component selection, providing technical support for PCBA manufacturing.

2

**Engineering Team:** Responsible for design optimization, production process development, equipment maintenance, and solving technical issues that arise during production.





- 1 **Production Team:** Responsible for the actual manufacturing process, including SMT placement, DIP insertion, soldering, and assembly, ensuring production follows processes and meets quality standards.
- 2 **Quality Control Team:** Monitors product quality throughout the entire process, conducting incoming quality control (IQC), in-process quality control (IPQC), and outgoing quality control (OQC) to ensure products meet standards.
- 3 **Testing Team:** Performs functional testing, reliability testing, and FCT to ensure PCBA products function correctly and have strong stability.



### Design Files

Core technical documents such as Gerber files, BOM, schematics, PCB layouts, and software code.

### Manufacturing Processes

Technical details related to special processes and production workflows.

### Patents & Custom Designs

Proprietary technologies and unique customer designs must be strictly protected.

### Customer Information

Business-sensitive data, including company details, contacts, and order information.

### Supply Chain & Testing Data

Sensitive information such as specified materials, quality inspection reports, and production schedules.





创意 感动 生活  
The Creative Life



## Customer satisfaction

With outstanding product quality, professional technical support, and efficient supply chain management, we have earned high recognition from our customers. Many companies, after working with us, express great satisfaction with our PCBA manufacturing capabilities and one-stop services, establishing long-term partnerships with us. Our clients span industries such as medical, automotive, industrial control, and communications, including both renowned enterprises and fast-growing innovative companies. They trust our high-quality manufacturing, strict quality control, and flexible delivery capabilities, considering us a reliable long-term strategic partner.





### 1 Technical Support

-Our dedicated service and technical support team will check and reply customer complain in 24h.

### 2 Warranty and Repair Services:

-Standard warranty coverage for all PCBA products.  
-Efficient repair and replacement services for defective components.

### 3 On-Site Assistance

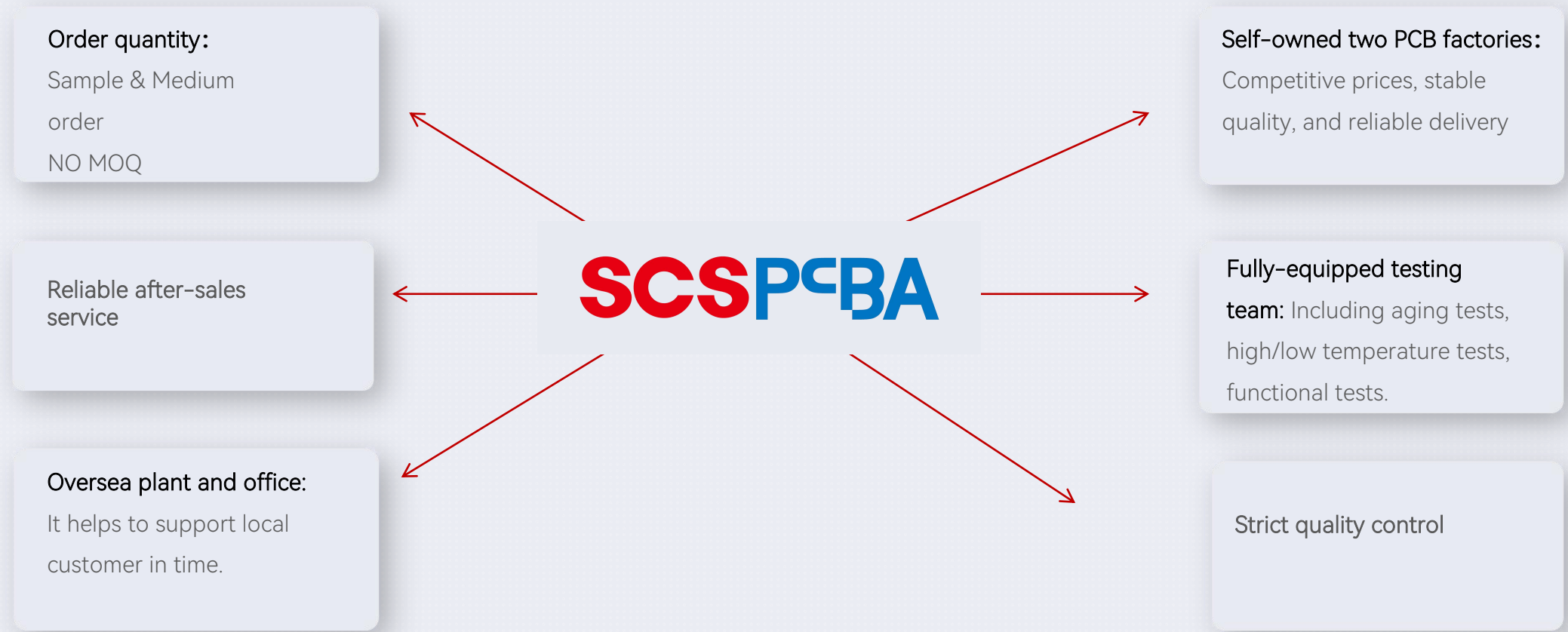
-For complex quality problem, we can dispatch our agent or technical engineer to local to assist.

### 4 Feedback and Continuous Improvement

-We collect customer feedback to improve our quality and service

## Why do you chose SCS ?

**SUCCESS**





# Exhibitions









# Thanks



One-stop PCBA Service Provider

SUCCESS CIRCUITS GROUP LIMITED

Telephone:  
+86 075525618511

Website:  
[www.scscircuits.com](http://www.scscircuits.com)  
[www.scspcba.com](http://www.scspcba.com)

Businss center Address:  
3rd Floor, No. 33, Ansheng Road,  
Ma'anshan Community, Shajing,  
Bao'an District, Shenzhen